

Coolant Superfiltration Systems



Superior consistent performance for your cutting oil

www.comatfilters.com



Founded in 1987 COMAT is an engineering company specialized in systems and technology for the management of metalworking fluids in the machine tool industry.

Having developed a unique know-how in this field, starting from a detailed and throughout analysis of each client need, Comat: analyzes, designs, manufactures, sells and provides first-class after sales support for its Superfiltration Systems.

Superfiltration Technology is the process by which contaminant particles larger than 3 μm are removed from cutting fluid and fluid is maintained at stable desired temperature.

Superfiltration Systems with continuously regenerating filtering media provide superior consistent performance, higher energy efficiency and lower lifetime cost for your filtering need.

Today, more than 20,000 machine-tools of the most important manufacturers use our technology worldwide, with more than 20.000.000 liters of metalworking oil Superfiltered every minute.

Superfiltration Systems represent the **BEST RATIO** between **QUALITY AND PRICE** as proved by microscopy test



Coolant Superfiltration Systems



Application

The application range of Superfiltration Technology is mainly dedicated to parts' surface finishing where tolerances and roughness must be strictly controlled, otherwise the quality of the products is compromised. For this reason these systems are mainly connected with grinders, sharpening, lapping and honing machines.

Sectors

In addition our systems are more and more applied to [automatic lathe units](#) to filter oil recovered from chips centrifugation and from the periodical emptying of the tanks and for the oil used at high pressure for drilling process.

Remote Monitoring

Superfiltration Systems can be monitored and controlled by:

- Onboard Control Panel
- Remote PCs
- Tablets
- Smartphones

& Optimization

To meet different daily working conditions of machine tools, thanks to a remote app, it is possible to monitor in real time our Superfiltration Systems and [choose immediately an adaptive optimization cycle](#).



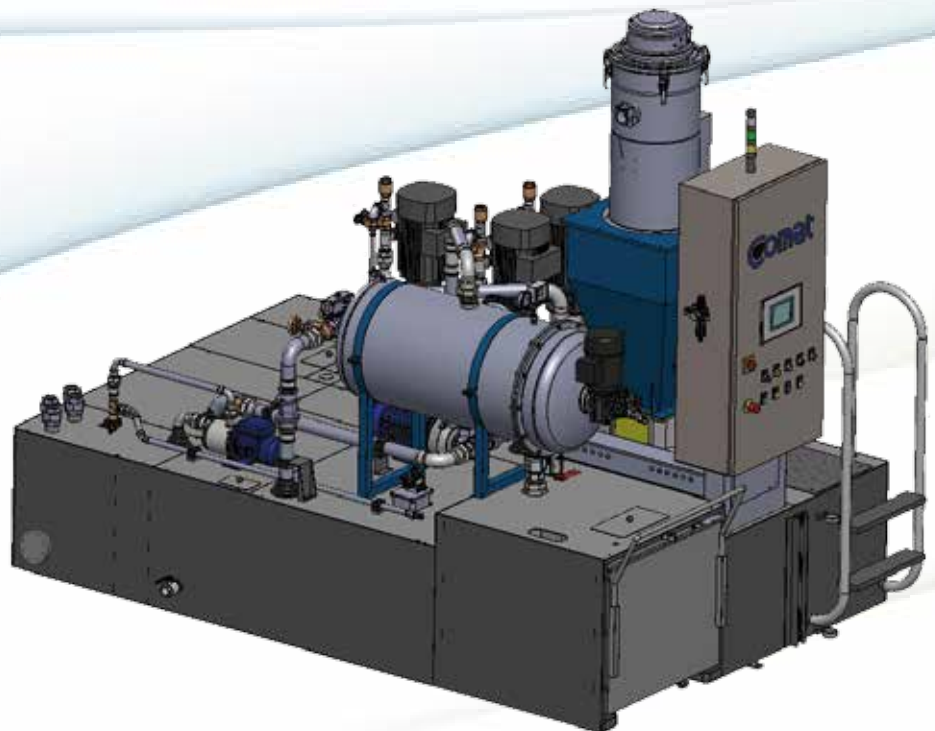
Model 1F14 for 1-2 machine-tools

- Filtration Capacity
180 l./min. nominal
- Fluid Compatibility
All straight cutting oils (no emulsions)
- Contaminants
Carbide, Cermet, PCD, High Speed Steel, Precious metals, Cast iron, Iron alloys, Copper alloys, Aluminum, Ceramic, Plastics
- Filtration Rating
3 µm nominal
- Dimensions
2600 x 1300 x 2000 mm
- Fluid Volume (min / max)
1200 l.
- Filter Media
Cellulose Powder, Mineral Powder
- Filtering Area
4.4 m²
- Filter Media Consumption
3 kg per Work-Cycle



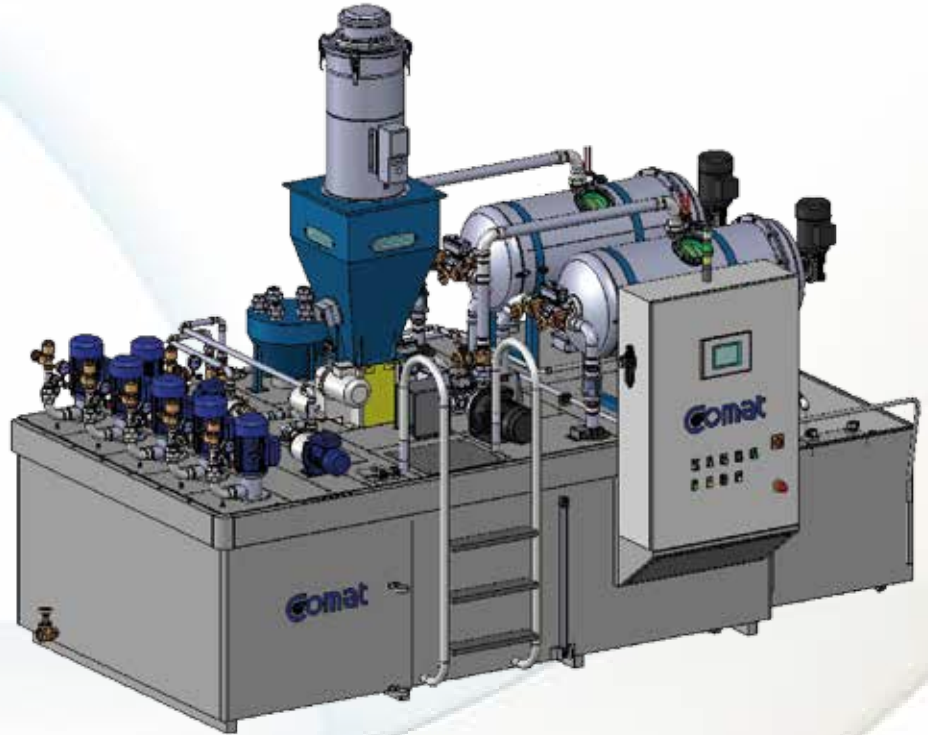
Model 1F24 for 3-4 machine-tools

- Filtration Capacity
270 l./min. nominal
- Fluid Compatibility
All straight cutting oils (no emulsions)
- Contaminants
Carbide, Cermet, PCD, High Speed Steel, Precious metals, Cast iron, Iron alloys, Copper alloys, Aluminum, Ceramic, Plastics
- Filtration Rating
3 µm nominal
- Dimensions
2500 x 2000 x h 1900 mm
- Fluid Volume (min / max)
2700 l.
- Filter Media
Cellulose Powder, Mineral Powder
- Filtering Area
7.5 m²
- Filter Media Consumption
5 kg per Work-Cycle



Model 2F24 for 5-6 machine-tools

- Filtration Capacity
540 l./min. nominal
- Fluid Compatibility
All straight cutting oils (no emulsions)
- Contaminants
Carbide, Cermet, PCD, High Speed Steel, Precious metals, Cast iron, Iron alloys, Copper alloys, Aluminum, Ceramic, Plastics
- Filtration Rating
3 µm nominal
- Dimensions
3800 x 1800 x h 2200 mm
- Fluid Volume (min / max)
5100 l.
- Filter Media
Cellulose Powder, Mineral Powder
- Filtering Area
15 m²
- Filter Media Consumption
10 kg per Work-Cycle



Model 3F24 for 7-9 machine-tools

- Filtration Capacity
810 l./min. nominal
- Fluid Compatibility
All straight cutting oils (no emulsions)
- Contaminants
Carbide, Cermet, PCD, High Speed Steel, Precious metals, Cast iron, Iron alloys, Copper alloys, Aluminum, Ceramic, Plastics
- Filtration Rating
3 µm nominal
- Dimensions
4000 x 2200 x h 2500 mm
- Fluid Volume (min / max)
7000 l.
- Filter Media
Cellulose Powder, Mineral Powder
- Filtering Area
22.5 m²
- Filter Media Consumption
15 kg per Work-Cycle



Application Images Gallery

We supply some international well-known brands and our plants equip top brands machine-tools such as:





Saacke



Schneeberger



SMP Technik



Stähli



Strausak



Studer

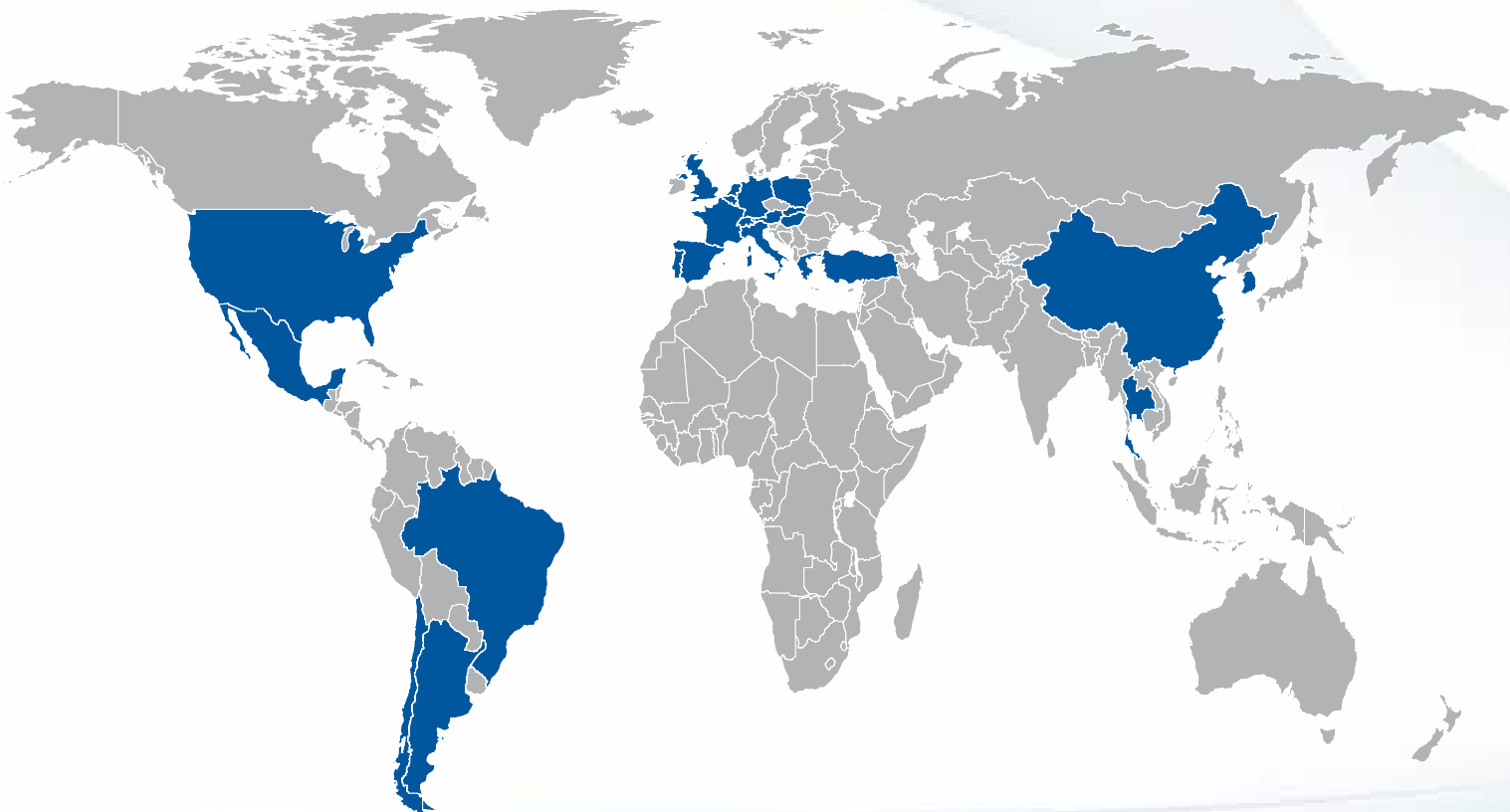


Vollmer



Walter

OUR SUPERFILTRATION SYSTEMS ARE USED AROUND THE WORLD



COMAT Srl

via G. Puccini, 7 - 20010 Ossonova (Milano - Italy)
Tél: +39 02 90.38.41.21 - Fax: +39 02 90.38.40.17
info@comatfilters.com
www.comatfilters.com