



*Olivine & more...*

Eryas Mining Company has been founded since 2009 and since then has been carrying on its activities in industrial minerals, especially olivine and olivine based refractories together with mines and factories in Iskenderun. Eryas is a significant supplier for both domestic and foreign Iron & Steel, Foundries, Refractories and Sand Blasting markets. Staffed 85 employees.





- EBT TAP HOLE FILLER SAND
- TUNDISH BACKING SAND
- FOUNDRY SAND
- SLAG CONDITIONER SAND
- REFRACTORY SAND
- BLASTING SAND



# SPECIFICATIONS

## 0-3 MM OLIVINE SAND

### CERTIFICATE OF ANALYSIS

Agent :	Product Group : Slag Conditioner
Customer :	Product : 0-3 MM
Cust. Order No :	Product Code : ERY 300 /0-3
Package : Big-bag	Quantity :
Date Delivered :	

### PHYSICAL PROPERTIES

Appearance	Grayish-green particles
Grain Shape	Angular
Melting Range	1750 °C
Specific Gravity	3,2 gr/cm <sup>3</sup>
Bulk Density	1,85 gr/cm <sup>3</sup>
Solubility in Water	Negligible
pH	8 - 8,5
Hardness (MOH)	6,5 - 7

### CHEMICAL ANALYSIS

	Minimum (%wt)	Maximum (%wt)
MgO	43	48
SiO <sub>2</sub>	41	43
Fe <sub>2</sub> O <sub>3</sub>	8	10
Al <sub>2</sub> O <sub>3</sub>	0,3	1,0
Na <sub>2</sub> O	0,0	0,1
Cr <sub>2</sub> O <sub>3</sub>	0,3	0,8
NiO	0,2	0,4
MnO	0,0	0,2
CaO	0,0	0,8
K <sub>2</sub> O	0,0	0,1
LOI	0,0	3,0
Moisture	0,0	6,0

### PARTICLE SIZE ANALYSIS

	Sieve Size (mm)	Minimum (%)	Maximum (%)
(%) Retained on	+ 8.0	0.0	0.5
Sieves	+ 3.0	0.0	10.0

## 10-40 MM OLIVINE SAND

### CERTIFICATE OF ANALYSIS

### PHYSICAL PROPERTIES

Appearance	Grayish-green particles
Grain Shape	Angular
Melting Range	1750 °C
Specific Gravity	3,2 gr/cm <sup>3</sup>
Bulk Density	1,85 gr/cm <sup>3</sup>
Solubility in Water	Negligible
pH	8 - 8,5
Hardness (MOH)	6,5 - 7

### CHEMICAL ANALYSIS

	Minimum (%wt)	Maximum (%wt)
MgO	44	48
SiO <sub>2</sub>	41	43
Fe <sub>2</sub> O <sub>3</sub>	8	10
Al <sub>2</sub> O <sub>3</sub>	0,3	1,0
Na <sub>2</sub> O	0,0	0,1
Cr <sub>2</sub> O <sub>3</sub>	0,3	0,8
NiO	0,2	0,4
MnO	0,0	0,2
CaO	0,0	0,8
K <sub>2</sub> O	0,0	0,1
LOI	0,0	3,5
Moisture	0,0	3,5

### PARTICLE SIZE ANALYSIS

	Sieve Size (mm)	Minimum (%)	Maximum (%)
(%) Retained on	40,0	0.0	12.0
Sieves	<8.0	0.0	8.0

- Capacity of the quarry is 250,000,000 MTON.
- Working in two different part of the quarry. Volume of the quarry currently is 4,000,000 MTON/YEAR







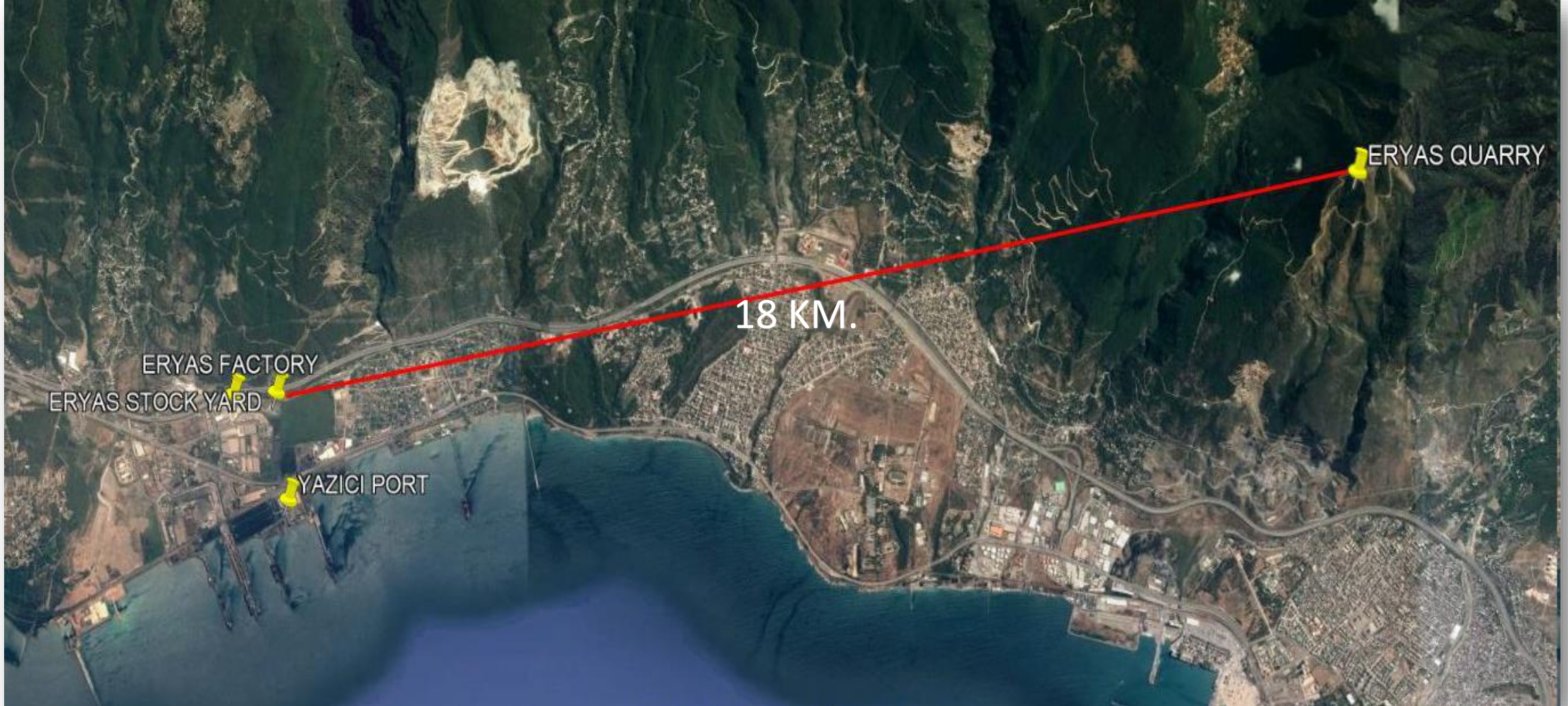
- Plant is located in Iskenderun Organized Industrial Zone.
- Production capacity is 150,000 MTON/MONTH.
- Plant is composed of high technology equipments.

# STOCK YARD



- Total open area is 32 Acres and bulk capacity is 250,000 MTON.
- Total close area is 6,000 M<sup>2</sup> and bulk capacity is 60,000 MTON.
- Distance to the nearest port is 900 METRE.







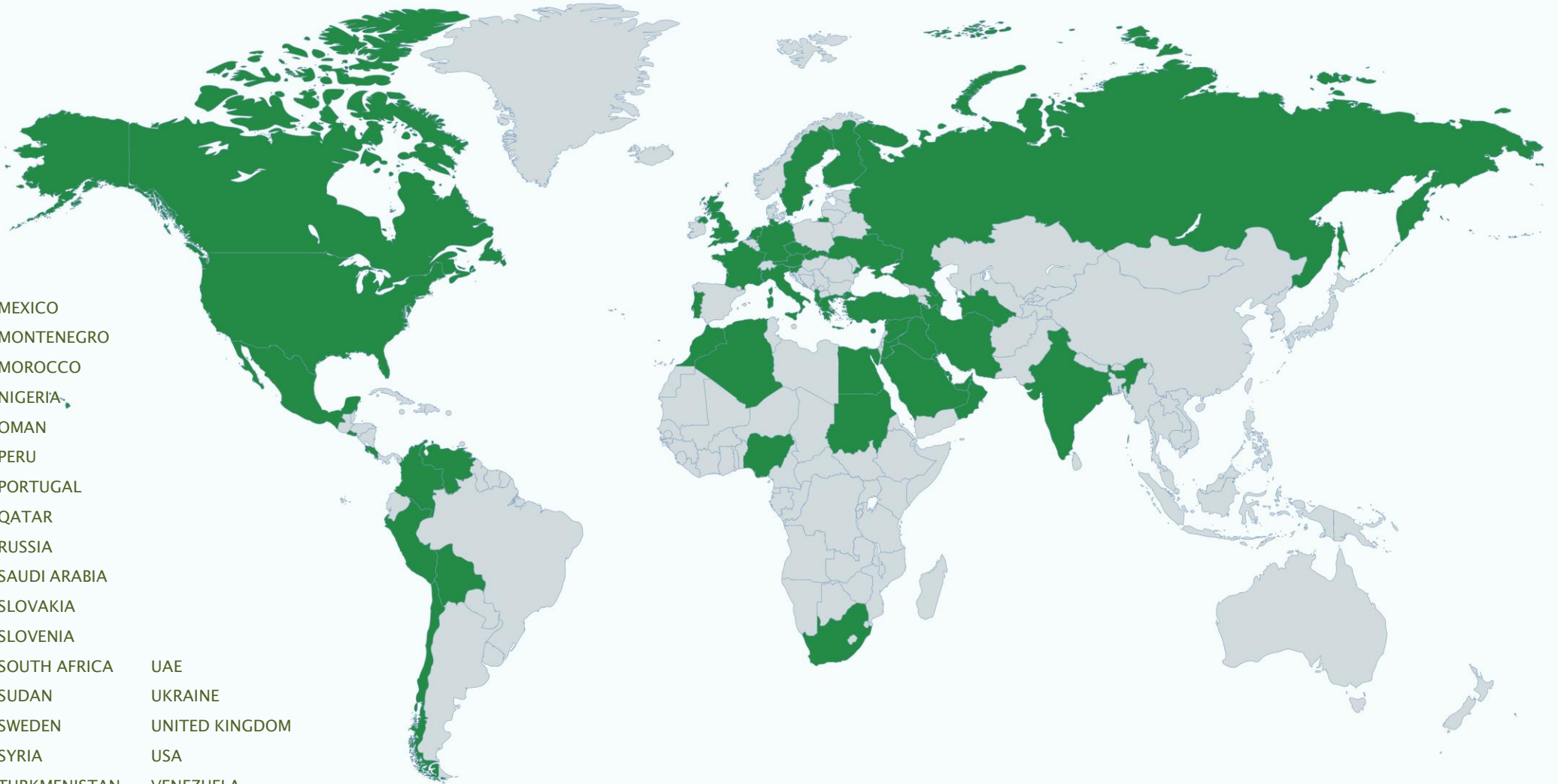
Because of our plant location near major highways and ports, we can ensure immediate shipments throughout Turkey and other countries. This region is the largest port of the Middle East to the other regions.





# ERYAS EXPORT REFERENCES

ALBANIA		
ALGERIA		
AZERBAIJAN		
BAHRAIN		
BOLIVIA		
CANADA		
CHEZH REPUBLIC	MEXICO	
CHILE	MONTENEGRO	
COLOMBIA	MOROCCO	
COSTA RICA	NIGERIA	
EGYPT	OMAN	
EL SALVADOR	PERU	
FINLAND	PORTUGAL	
GERMANY	QATAR	
GREECE	RUSSIA	
HOLLAND	SAUDI ARABIA	
INDIA	SLOVAKIA	
IRAN	SLOVENIA	
IRAQ	SOUTH AFRICA	UAE
ITALY	SUDAN	UKRAINE
JORDAN	SWEDEN	UNITED KINGDOM
K.K.T.C.	SYRIA	USA
KUWAIT	TURKMENISTAN	VENEZUELA











































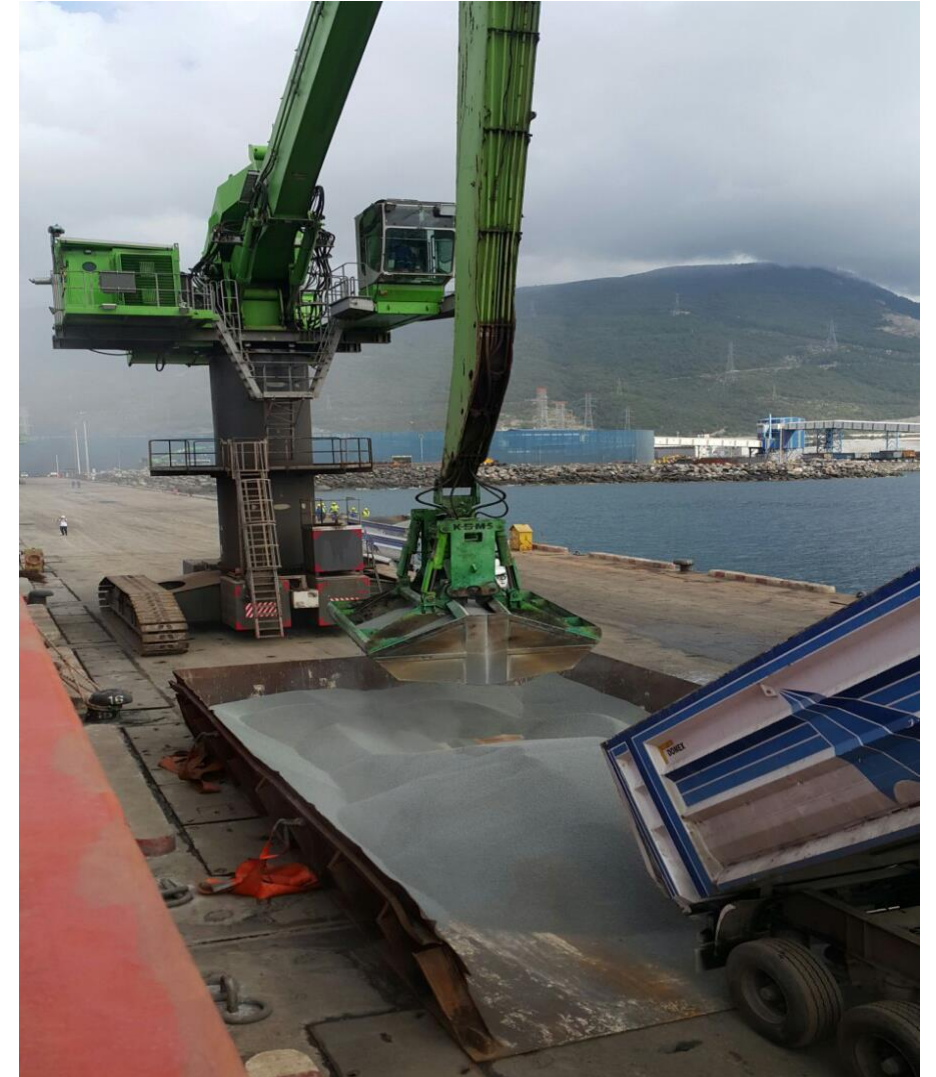




































**THANK YOU!**

- [www.eryas.com](http://www.eryas.com)
- [eryas@eryas.com](mailto:eryas@eryas.com)